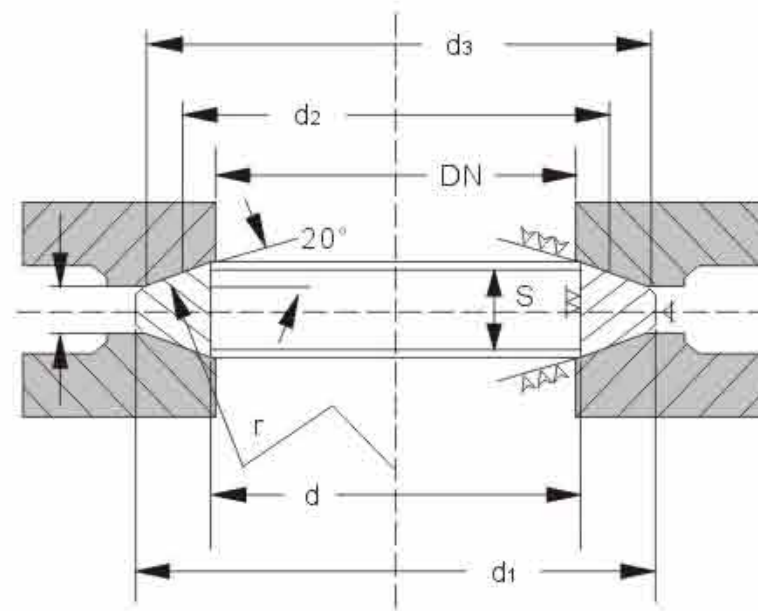


## LENS RING GASKETS



Lens gaskets are reliable gaskets for high pressure applications. They are re-usable also as the sealing effect is brought about almost entirely by elastic deformation of the gasket surface.

Lens gaskets are also insensitive to overloading. Increasing the load on the gasket joint leads to an enlargement of the contact area between the spherical lens surface and the conical flange groove so that the increase in unit compressive load is less than a proportional one.



### Dimensions according to DIN 2696

Dimensions in mm

DN	d		d1	a	d2	r	d3	x
	min.	max.		max.				
<b>PN 64 – 400</b>								
10	10	14	21	7	17.1	25	18	5.7
15	14	18	28	8.5	22	32	27	6
25	20	29	43	11	34	50	39	6
40	34	43	62	14	48	70	55	8
50	46	55	78	16	60	88	68	9
65	62	70	102	20	76.6	112	85	13
80	72	82	116	22	88.2	129	97	13
100	94	108	143	26	116	170	127	15
125	116	135	180	29	149	218	157	22
150	139	158	210	33	171	250	183	26
<b>PN 64 – 100</b>								
175	176	183	243	31	202.5	296	218	28
200	198	206	276	35	225	329	243	27
250	246	257	332	37	277.7	406	298	25
300	295	305	385	40	323.5	473	345	26
350	330	348	425	41	368	538	394	23
400	385	395	475	42	417.2	610	445	24
<b>PN 160 – 400</b>								
175	162	177	243	37	202.5	296	218	21
200	183	200	276	40	225	329	243	25
250	230	246	332	46	277.7	406	298	25
300	278	285	385	50	323.5	473	345	30